



FARADTECH

INNOVATIVE SOLUTIONS PVT. LTD.

We Power Your Productivity



AUTOMOTIVE



AIRFORCE



R & D



ARMY



INDUSTRIAL



RAILWAYS



NAVY

Regd. Office : 23, Brundavan Nagar Sathnur Village, Jala Hobli
Bangalore, Karnataka - 562157

Email : admin@faradtech.in, Website: www.faradtech.in

Call : + 91-9591037711 CIN : U26209KA2023PTC175514



ABOUT US:

M/s Faradtech is engaged in Legacy, Current and Futuristic technology Customization/Development under Indigenization/ Make in India program. With constant Research & Innovation in technology, we are committed to provide world class products & services to our customers.

Faradtech offers a wide range of Low, Medium & High Power, Standard or Modified Power Supplies (build to specifications).

We are certified by AS9100 Rev D for Quality management system for companies in the aviation, space, and defense industry.

Certified to various Military Standards

MIL-STD-810E/810F, MIL-STD-461E/461F, CE102, CS115, CS116, JSS55555

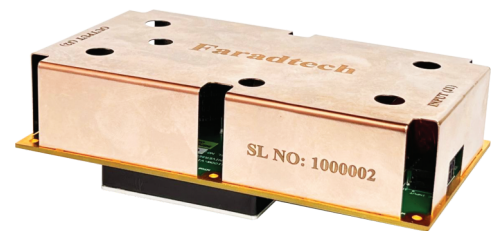
OUR PRODUCTS CATEGORIES:

M/s Faradtech offers a wide range of Innovative Products & Solutions in MIL-Grade and Industrial Applications. With focus on customer's demands and requirements, we have six verticals of our business as follows:

POWER SUPPLY & BATTERY MANAGEMENT

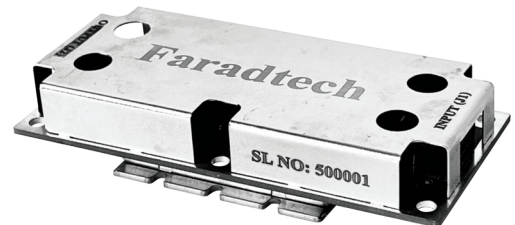
❖ AC-DC Converters

Input: 90-264V, Output: 12V/24V, Power: 50-700W



❖ DC-DC Converters

Input: 90-264V, Output: 12V/24V, Power: 50-700W



FEATURES

- Low ripple & Noise (Vpk-pk mV) ≤ 70 m V at Output
- Compact Size for Industrial and Military Application
- Fully protected for Over Temperature, Over Voltage & Over Current.
- Reverse Polarity Protection
- Short circuit & Load Protection
- Built in Active PFC

FIS FA SERIES

MODEL	FA100 -12	FA100 -24	FA250 -12	FA250 -24	FA700 -12	FA700 -24	
MAX OUTPUT POWER[W]	100	100	250	250	700	700	
DC OUTPUT	VOLTAGE[V]	12	24	12	24	12	24
	CURRENT[A]	8.3	4.16	20.83	10.4	58.33	29.16

SPECIFICATIONS

	MODEL	FA100-12	FA100-24	FA250-12	FA250-24	FA700-12	FA700-24
INPUT	VOLTAGE[V] RANGE	90-264 V					
	FREQUENCY	47 - 63 Hz	47 - 63 Hz	47 - 63 Hz	47 - 63 Hz	47 - 63 Hz	47 - 63 Hz
	EFF IC IENCY [%]	91 % (Typ)	91 % (Typ)	91 % (Typ)	91 % (Typ)	88 % (Typ)	90.5 % (Tpy)
	LEAKAGE CURRENT	0.70 mA	0.70 mA	0.70 mA	0.70 mA	0.70 mA	0.70 mA
	POWER FACTOR LOAD	0.99 (Typ) at 230 V AC 100%					
OUTPUT	VOLTAGE[V]	12 VDC	24 VDC	12 VDC	24 VDC	12 VDC	24 VDC
	CURRENT[A]	8.3 A	4.16 A	20.83 A	10.4 A	58.33 A	29.16 A
	POWER[W]	100 W	100 W	250 W	250 W	700 W	700 W
	TRIMMING VOLTAGE	± 5 %	± 5 %	± 5 %	± 5 %	± 5 %	± 5 %
	LINE REGULATION	± 0.5%	± 0.5%	± 0.5%	± 0.5%	± 0.5%	± 0.5%
	LOAD REGULATION	± 0.5 %	± 0.5 %	± 1 %	± 1 %	± 0.1%	± 0.1 %
	MINIMUM LOAD	0%	0%	0%	0%	0%	0%
	RIPPLE&NOISE.VOLTAGE	50 m Vpk-pk	35 m Vpk-pk	70 m Vpk-pk	35 m Vpk-pk	57 m Vpk-pk	24 m Vpk-pk
	OVP (RANGE)	110-140 %	110-140 %	110-140 %	110-140 %	110-140 %	110-140 %
	OCP (AUTO RECOVERY)	Hiccup Mode	Hiccup Mode	Hiccup Mode	Hiccup Mode	Hiccup Mode	Hiccup Mode
	SCP	Continuous	Continuous	Continuous	Continuous	Continuous	Continuous
	OTP	110° C	110° C	110° C	110° C	110° C	110° C

GENERAL SPECIFICATIONS

OPERATING CASE TEMPERATURE	-30°C to 100°C
STORAGE TEMPERATURE	- 40°C to 150°C
ISOLATION VOLTAGE (INPUT TO OUTPUT)	3000 VDC
HUMIDITY (NON-CONDENSING)	5-95%
COOLING	Conduction
CALCULATED MTBF2	~1. 1MH R
100/130 kHz (Typ)	100/130 kHz (Typ)

MECHANICAL SPECIFICATIONS

DIMENSIONS IN mm	150 X 87 X 48(FA100) 160 X 100 X 35(FA250) 220 X 89.5 X 59(FA700)
WEIGHT	~210g ~320g ~450g
INPUT CONNECTOR3	J1(MPN-0430451000) J1(MPN-0430451000) J1(MPN-0430451000)
OUTPUT CONNECTOR4	J2(MPN-0430451200) J2(MPN-0430452401) J2(MPN-0430452000)
DROP TEST	MIL-STD-810F
BUMP & VIBRATION	MIL-STD-810F
SHOCK	MIL-STD-810F

FIS FD SERIES

MODEL	FD500936-12	FD500936-24	FD1000936-12	FD1500936-12	FD1500936-24	FD3000936-12	FD6000936-24
MAX OUTPUT POWER[W]	500	500	1000	1500	1500	3000	6000
DC OUTPUT	VOLTAGE[V]	12	24	12	12	24	24
	CURRENT[A]	4.16	2.08	8.4	12.5	6.25	25

SPECIFICATIONS

	MODEL	FD500936-12	FD500936-24	FD1000936-12	FD1500936-12	FD1500936-24	FD3000936-12	FD6000936-24
INPUT	VOLTAGE[V] RANGE	9-36 VDC						
	EFF IC IENCY [%]	91 % (Typ)	89 % (Typ)	89%(Typ)	85%(Typ)	85%(Typ)	87%(Tpy)	87%(Tpy)
	UVLO	< 9 V	< 9 V	< 9 V	< 9 V	< 9 V	< 9 V	< 9 V
	OVP	~ 50 V	~ 50 V	~ 50 V	~ 50 V	~ 50 V	~ 50 V	~ 50 V
OUTPUT	VOLTAGE[V]	12 VDC	24 VDC	12 VDC	12 VDC	24 VDC	12 VDC	24 VDC
	CURRENT[A]	4.16 A	2.08 A	8.4 A	12.5 A	6.3 A	25 A	25 A
	POWER[W]	50 W	50 W	100 W	150 W	150W	300 W	600 W
	TRIMMING VOLTAGE	± 10 %	± 10 %	± 10 %	± 10 %	± 10 %	± 10 %	± 10 %
	LINE REGULATION	± 0.3%	± 0.3%	± 0.3%	± 0.5%	± 0.1%	± 0.3%	± 0.3%
	LOAD REGULATION	± 0.5%	± 0.5%	± 0.5%	± 0.5%	± 0.1%	± 0.5%	± 0.5%
	MINIMUM LOAD	0%	0%	0%	0%	0%	0%	0%
	RIPPLE&NOISE VOLTAGE	60 m Vpk-pk	64 m Vpk-pk	65 m Vpk-pk	65 m Vpk-pk	70 m Vpk-pk	60 m Vpk-pk	42 m Vpk-pk
	OVP	120 % (Typ)	120 % (Typ)	120 % (Typ)	120 % (Typ)	120 % (Typ)	120 % (Typ)	120 % (Typ)
	OCP	120 % (Typ)	120 % (Typ)	120 % (Typ)	120 % (Typ)	120 % (Typ)	120 % (Typ)	120 % (Typ)
	OTP	110° C	110° C	110° C	110° C	110° C	110° C	110° C

OPERATING & STORAGE SPECIFICATIONS

OPERATING CASE TEMPERATURE	-30°C to 85°C
STORAGE TEMPERATURE	-40°C to 150°C
ISOLATION VOLTAGE (INPUT TO OUTPUT)	2250 VDC
ISOLATION RESISTANCE (INPUT TO OUTPUT)	100 MΩ
ISOLATION CAPACITANCE (INPUT TO OUTPUT)	1500pF
HUMIDITY (NON-CONDENSING)	5-95%
COOLING	Conduction
CALCULATED MTBF2	~1. 1MHR

MECHANICAL SPECIFICATIONS

DIMENSIONS in mm	117X52.7X30 150 X 70.5 X 31(FD3000936) 220 X 102 X 43(FD6000936)
WEIGHT	~100g ~200g ~400g
INPUT CONNECTOR	J1(MPN-043045800) J1(MPN-0430451000)
OUTPUT CONNECTOR4	J2(MPN-043045800) J2(MPN-0430451000)
DROP TEST	MIL-STD-810F
BUMP & VIBRATION	MIL-STD-810F
SHOCK	MIL-STD-810F

FADB150-12

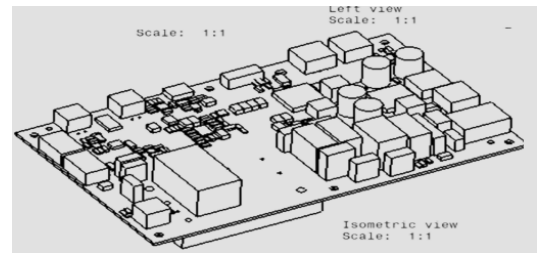
SMART POWER SUPPLY CUM BATTERY CHARGER

PRODUCT DESCRIPTION:

The Smart Power Supply with Battery Charger is indigenously designed and developed for multiple input such as AC (90V-264V), DC(9V-36V) & Battery. It efficiently charges Li-Ion batteries, switching between constant current and constant voltage modes for optimal safety and performance. It is a microcontroller enabled device which helps to monitor and control the process. It's triple input options offers flexibility, while built-in safety features like overvoltage, overcurrent, short circuit, and thermal protection ensure user safety and device well-being.

FEATURES:

- ❖ Types of Input Sources – AC, DC & BATTERY.
- ❖ Fully protected - OVP, OTP, OCP, UVLO and Reverse Polarity.
- ❖ Indication – LED Input Power ON(Green), Output power OK(Green) & Fault indication (AmberLED)
- ❖ Fixed switching Frequency provides predictable EMI.
- ❖ Can be used in Railway, Defense, Industry, Automation etc.
- ❖ Designed to meet MIL-STD 461E/F, JSS55555 & MIL-STD 810F



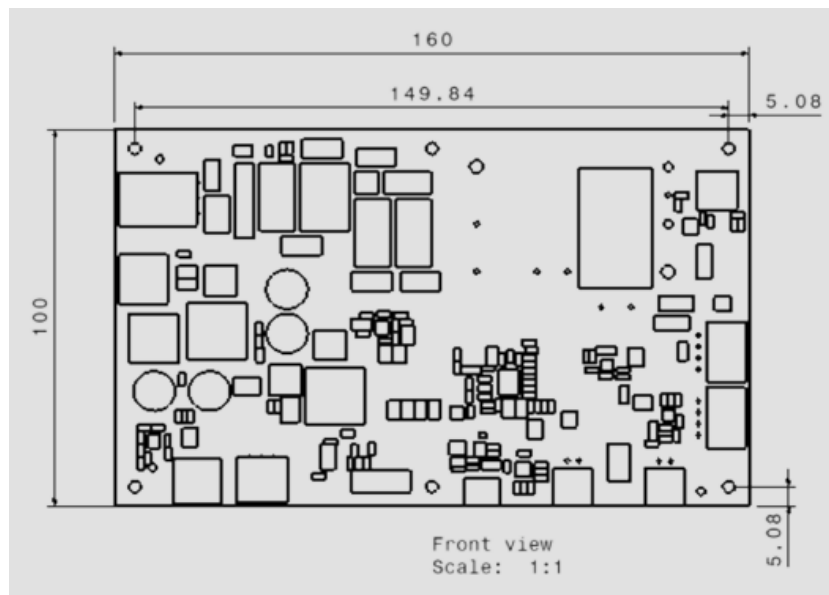
INPUT SPECIFICATIONS	
Input Voltage Range	
a) AC	90 - 264 V
b) DC	9- 36 V
c) Battery	Li-Ion
Efficiency	97%(Typical)
Enable Function	Positive Logic

OUTPUT SPECIFICATIONS	
Output Voltage (Nominal)	12V ± 0.2V
Trimming Output Voltage	± 10.0%
Output Power	120W
Load Regulation	± 1 %
Minimum Load	0%
Output Ripple & Noise Voltage	<1%

GENERAL SPECIFICATIONS	
Operating Case Temperature	- 30° C to 65° C
Storage Temperature	- 40° C to 85° C
Isolation Voltage (Input to Output)	2250 V _{RMS}
Isolation Resistance (Input to Output)	100 MΩ
Isolation Capacitance (Input to Output)	1500 pF
Humidity (non-condensing)	5 - 95 %
Calculated MTBF	~ 1.1 MHR

MECHANICAL SPECIFICATIONS	
Dimension	160 X 100 X 35 mm
Drop Test	MIL-STD-810F
Bump & Vibration	MIL-STD-810F
Shock	MIL-STD-810F

BATTERY CHARGING SPECIFICATIONS	
Battery Type	Li-Ion
Charging Voltage	14-16.8V DC
Charging current	4A Max
Protections	Under voltage Lockout, Over Current Protection, Reverse Polarity Protection, Temperature Control, Automatic Cut-off



10.1" i5/ i7 Rugged Tablet

FIS-T101

FEATURES & BENEFITS:

- ❖ Intel® Core™ i5-1235U/i7-1255U Processor
- ❖ 10.1" Display, 1920 x 1200 ppi, 700nits
- ❖ IPS Display with Capacitive Touch Glass
- ❖ 2.0MP Front Camera & 8.0MP Rear Camera
- ❖ Dual Battery – Internal 700mAh+ 5000mAh
- ❖ Windows 11 / RHEL Support
- ❖ MIL-STD-810G, IP65,
- ❖ Operating temp -40°C to +70°C
- ❖ Indigenously developed (Make in India)



TECHNICAL SPECIFICATIONS:		
Description	i5 Core CPU	i7 Core CPU
	Type of processor	
CPU	Intel® Core™ i5-1235U Processor 12M Cache, up to 4.40 GHz	Intel® Core™ i7-1255U Processor 12M Cache, up to 4.70 GHz
GPU	Intel® Iris® Xe Graphics	
RAM	Available in 8GB / 16GB / 64GB variants	
Storage	128GB / 256GB / 512GB/ Options available	
LCD	Size 10.1" inch	
Resolution	1920 x 1200 ppi	
Brightness	Upto 700nits (Sun readable)	
Touch Screen (Structure Classification)	Multi-point Capacitive Touch (G+G) >=6H Strengthen Glass	
Camera Spec	2MP (front) & 8MP (rear)	
Available Interfaces	1x HDMI 1.4a 1x POGO PIN 1x USB-C	1x USB-A 3.0 1x 3.5mm Audio 1x 5.5mm DC Jack
Battery In-built	7.4V / 700 mAh Li-Po Battery (approx. 30 minutes standard operation)	
Battery externally provided	7.4V/ 5000 mAh Li-Po Battery (approx. 5.5 hours standard operation) along with dock charger	

WIFI	Support WIFI 6, 802.11a,b,d,e,g,h,i,k,n,r,u,v,w,ac,ax (2.4G / 5.8G)
Bluetooth	BT 5.1
Comparable Network	LTE-FDD: B1/B3/B5/B7/B8/B20 LTE-TDD: B40 WCDMA: B1/B5/B8 GSM: B3/B8
Navigation	Support GPS/GLONASS
Biometrics Security Features	Fingerprint (Pre-set), NFC (Optional)
Operating System	Windows 11 / RHEL Supports
Extension Module Options	1. RJ45 (GbE LAN), 2. DP9 (RS232), 3. USB-A 2.0, 4. 2D Barcode scanner (Optical Resolution 5 mil/ scan speed: 50 times/s)
Audio	In built speaker
Video	Supports all types of video format

MECHANICAL FEATURES:	
Dimension in mm	289.9 x 196.7 x 27.4
Weight in gm	1140g (approx., main device)
Colour Specification	Black
Buttons	Power *1 Reset *1 (Pinhole key, One button reset) V+ *1, V- *1
Indicators (LED)	Power, Battery, HDD, Case Key Lock, 3G/4G

ENVIRONMENTAL CONDITIONS:	
Humidity	95%, non-condensing
Shock & Vibration	MIL-STD-810G
IP Rating	IP65
Drop Test	1.22m Dropping
Operating Temperature	-30°C to 65°C
Storage Temperature	-40°C to 70°C
Electronics Discharge	± 8kV contact discharge, ± 15kV air discharge

24" Resistive Touch LCD

FIS-D2401 R



FEATURES & BENEFITS:

- ❖ 24" LCD Size
- ❖ 1920 x 1200 Resolution
- ❖ Resistive Touch Screen
- ❖ AG Strengthen Touch Glass
- ❖ 450nits Brightness
- ❖ EMI Mesh, Optical Bonding
- ❖ Open Frame Design

TECHNICAL SPECIFICATIONS:

LCD PANEL

LCD Size	24 Inch TFT LCD
Backlight	LED
Resolution	1920 x 1200
Interface	LVDS
View Angle	±89° (H), ±89° (V)
Luminance	450 nits (After bonding)
Contrast Ratio	1000:1
Aspect Ratio	16:10
Response Time	14 (Tr+Tf) ms
No. of colour	16.7 Million (8 bit/colour)
Active Area	518.4 (H) x 324 (V) mm
Pixel Pitch	0.27 (H) x 0.27 (V) mm
LED Life Time	50,000 hrs
Input Voltage	3.3V/ 5V/ 12V (Typical)

ENVIRONMENTAL CONDITIONS:

Operating Temp	-10° C to +60° C
Storage Temp	-20° C to +70° C
Humidity	Ta ≤ 40°C, 95%RH, non-condensing
Shock	Design to meet MIL-STD-810G
Vibration	Design to meet MIL-STD-810G
EMI/EMC	Design to meet MIL-STD461E/F

TOUCH SCREEN

Touch Screen	5-Wire Resistive Touch
Active Area	518.4 (H) x 324 (V) mm
Touch Interface	USB
Touch Glass	AG Strengthen Glass
EMI Mesh	Yes
Optical Bonding	Yes
Touch Drives	Supports Windows, Linux, Mac etc.
Input Voltage	3.3V / 5V

ACCESSORIES:

Boards	USB Touch Control Board
Cables	LVDS Cable, Touch Control Board Cable, LED Backlight Cable
Optical Bonding	Yes
Touch Drives	Support Windows, Linux, Mac, etc.

DUMP DISPLAYS

- ❖ Dump Displays
- ❖ Semi-Dump Displays
- ❖ Smart Displays

FEATURES:

- ❖ Our displays are capacitive, resistive and projected capacitive.
- ❖ With touch/without touch, the Displays provides visual clarity and reliability for critical applications in harsh environments.
- ❖ Our display comes with high resolution, exceptional image quality, sharpness, and vibrant colors.

SERVERS

- ❖ Rugged Servers
- ❖ Workstations
- ❖ NAS (Network Attached Storage)

FEATURES:

- High performance computing & Data Storage for seamless real-time communication & networking.
- Can withstand harsh conditions for both military and industrial applications.

KVM

The KVM system allows for management, monitoring, and control of an Enterprise Environment from a central location. It is designed to withstand the harsh environmental requirements to comply with Defence Specification (MIL STD 810F; 461E and IP 67/67) for Rugged Systems and have sealed connectors to ensure protection against water and dust.

L2/L3 ETHERNET SWITCHES

These switches are available as managed and unmanaged MIL grade switch categories. Advanced network features, compact size, include switching protocols, virtual LANS (VLANS), and bandwidth aggregation are standard. Layer 3 static routing enables on-device IPv4 and IPv6 static routing between VLANs without having to add a router upstream.

TURNKEY SOLUTIONS/BUILD TO SPECIFICATIONS BASED ON MICROPROCESSOR/MICROCONTROLLER/FPGA/INTEL i7 & XEON.

M/S Faradtech is also in the offset business in the area of Display Solutions, Power Supply, Rugged Servers, NAS, Keyboards, Keypads and Computing platforms.



WHY CHOOSE FARADTECH?

M/s FARADTECH is engaged in Innovative Design, Development and Manufacturing of various Rugged/MIL-Grade Displays, A/D Boards and Power Supply Converters for Defence, Paramilitary forces, Railways, industrial applications, etc., under “Make In India/Indigenization Program”.

As on today, COTS/MOTS Products/Modules are procured by different PSUs/Companies/Industries to meet their project requirement and solution is built around their COTS/MOTS.

The built solution resulting in high cost, Longevity, obsolescence management and support is unavailable from OEM/Vendors for extended period.

Hence, M/s FARADTECH has taken up the Standardization, Design, Development and manufacturing under “Make in India/Indigenization Program to meet the requirements of JSS55555 & MIL-STD 461E/F.

